



# GetRad Product Portfolio

## **Safety and Security**

---

Committed to  
Quality & Service Excellence

[www.getrad.ae](http://www.getrad.ae)

# Our Services

## Safety and Security

Delivering top-tier safety solutions and advanced technologies that ensure the protection of people, property, and assets, while promoting a secure and resilient environment in construction, infrastructure, and operational settings.

### Audible & Signaling Devices



Amber - Agricultural Machines



Amber - Earth Moving Machines



Amber - Break Down Services



Priority - Police Forces Vehicles



Buzzer



Priority - Ambulances



Priority - Fire Brigades



Amber - Industrial Vehicles



Amber - Forklift Trucks



Control Panel Devices



Priority - Police Motorcycles



Wearable Devices



Priority - Sustainable Mobility



Accessories & Spare Domes



Backup Alarm



Electromechanical Devices



Horns



Bells



LED Panel Lights



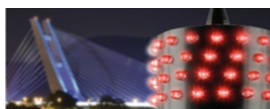
Temporary Signaling



Multieffect Signalling Devices



Explosion Proof Devices



Aircraft Warning Lights



EN54 Evacuation System



Outdoor Mass Warning Systems



Electronic Sirens

### CCTV Surveillance Systems



NVR - Professional



IR Dome & Bullet Cameras



POE NVR & NVR Kits



CCTV Accessories



**FX-N616POE**

- 4K 8MP UHD Preview Resolution
- 4 SATA Hard Disk Interface upto 32TB
- H.265+/H.264+ | 16CH POE Supporting, 25CH IPC Supporting Max



**FX-K402POE**

- 3.6mm HD lens | 2MP 1080P Resolution
- Night Vision: Dome-20M, Bullet-25M
- IP66-Metal Housing, H.265/H.264, BLC, Inbuilt POE, Plug and Play



**FX-IP210D**

- 3.6mm HD lens | 3MP Resolution
- High Quality Night Vision upto 20M
- IP65, H.265/H.264, Motion detector, Privacy zones, BLC



**FX-N808POE**

- 5MP HD Preview Resolution
- 1 SATA Hard Disk Interface (Up to 8TB)
- H.265+/H.264+ | 8CH POE Supporting, 9CH IPC Supporting Max





## Magnetic Locks & Accessories



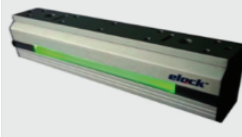
### EL-T1102EM

- Weatherproof Touch Access Keypad Controller.
- 125KHz RFID Card Proximity ID EM | Stand-Alone Device
- Verify via Password and or Card | Metal Case



### Elock-300

- Holding Force : 300lbs
- Lock Type: Fail-safe type
- Operating Voltage: 12V/24VDC
- Current Drawn: 330mA / 165mA



### Elock-1200SM

- Holding Force : 1200lbs with LED Monitored
- Built-in Delay Timer | ABS Bracket
- Dual Voltage 12 & 24VDC (Auto Switchable)

## Face & Fingerprint Time Attendance



### FR

- Slave Reader: Fingerprint & Card Authentication
- Stable operation under strong light
- Large fingerprint capture area and high image performance
- Comply with ISO/IEC 19794-2



### iF-IIF

- Designed and equipped with an AI-accelerated CPU, relying on deep learning algorithms.
- Wide dynamic range supports accurate face recognition under strong light, dark light, and backlight.
- Standard TCP/IP, RS485, and USB for communication with computer and servers together.
- Realtime attendance Monitoring with free software management and access control.



### iF686 - GPRS

- Bio-Metric Measurement: Face/ Fingerprint/Pin/Card Authentication
- Display: 2.8 inches TFT Color Screen.
- User Capacity: Face - 2000, Fingerprint - 5000, Log - 200000
- Wi-Fi: 2.4Ghz | GPRS: 2G/3G/4G | Backup Battery: 2-3 Hours



## Fire Rated Hotel Locks

## Non-Fire Rated Hotel Locks



### COMOS 5215

- Classic Style Stainless Steel Lock
- RFID MIFARE® Technology, 100,000 Times Write Life for Keycard
- Door Openings 20,000 Times for One New Battery
- Mortise Type: Euro Mortise



### 929-DMF1

- Material: Stainless Steel | UL Rated
- Unlock Way: Card/ Mechanical Key
- Mortise type: 6# | 3# | ANSI | Europe Mortise
- Optional Support: Bluetooth Unlock



### 930-6-DMF1

- Material: Stainless Steel | UL Rated
- Unlock Way: Card/ Mechanical Key
- Mortise type: ANSI Mortise
- Colors: Stainless Steel/ Golden PVD



### 930-5-DMF1

- Material: Stainless Steel
- Unlock Way: Card/ Mechanical Key
- Mortise type: 6# | 3# | 2# | ANSI Mortise
- Colors: Satin Stainless Steel/ Golden PVD



### 929-8-DMF1

- Material: Stainless Steel
- Unlock Way: Card/ Mechanical Key
- Mortise type: 6# | 3# | ANSI | Europe Mortise
- Optional Support: Bluetooth Unlock



### 6100-2-DMF1

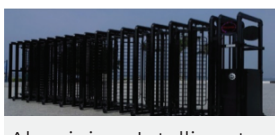
- Material: Stainless Steel & Zinc Alloy
- Unlock Way: Card/ Mechanical Key
- Mortise type: 6# | ANSI Mortise
- Optional Support: Bluetooth Unlock



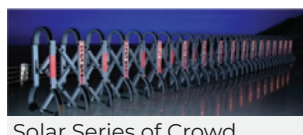
### Elock Hotel Door Lock System

- Multi Users with Different Rights
- Compatible RFID and IC Hotel Lock
- Guest Records Search and Printable
- It can open certain floor's doors in certain period

## Crowd Control Gates



Aluminium Intelligent Retractable Gates.



Solar Series of Crowd Control Gates with Night time Illumination



Crowd Control Gates



Stainless Steel Intelligent Retractable Gates.

## Hotel Door Lock Accessories

 <p><b>EL-A1628</b></p> <ul style="list-style-type: none"> <li>1 Touch Doorbell Set for Hotel Room</li> <li>2 Outside Unit, Inside Unit and Bell</li> <li>3 Wall Switch Especially Designed for Hospitality</li> </ul>	 <p><b>0309M</b></p> <ul style="list-style-type: none"> <li>1 Energy Saving Switch Material: PVC</li> <li>2 Software: Encrypt Mifare (Frequency 13.56Mhz) No-Working Situation will be Indicated in Red</li> <li>3 Function: Insert Card To Get Power   Power: 220V 30A   Dimension: 86*86*50mm</li> </ul>	 <p><b>H-MF9</b></p> <ul style="list-style-type: none"> <li>1 Mifare Encoder   Software: Encrypt Mifare (Frequency 13.56Mhz)</li> <li>2 Application: Program Mifare Card</li> <li>3 Material: PVC   Battery: USB   Function: Write-Read Card   Dimension: 118*150*91mm</li> </ul>	 <p><b>MIFARE 1</b></p> <ul style="list-style-type: none"> <li>1 Mifare Room Card</li> <li>2 Software: Encrypt Mifare (Frequency 13.56Mhz)</li> <li>3 Material: PVC   Dimension: 86*54mm</li> </ul>	 <p><b>0309M2</b></p> <ul style="list-style-type: none"> <li>1 Energy Saving Switch Material: PVC</li> <li>2 Software: Encrypt Mifare (Frequency 13.56Mhz) No-Working Situation will be Indicated in Red</li> <li>3 Function: Insert Card To Get Power   Power: 220V, 30A   Dimension: 86*86*50mm</li> </ul>
---	---	--	---	---

## Burglar Alarm System

 <p><b>FC-61A</b></p> <ul style="list-style-type: none"> <li>1 Wireless Door &amp; Window Sensor</li> <li>2 Power: 12V 23A Alkaline battery.</li> <li>3 Wireless Distance: Open area 100 to 130m.</li> <li>3 Working distance: &gt;=15mm.</li> </ul>	 <p><b>FX-HD01W</b></p> <ul style="list-style-type: none"> <li>1 Wireless smoke and heat detector.</li> <li>2 Adopted MCU auto-processing technology, stability improved.</li> <li>3 Sound &amp; flash alarm/ LED indicator.</li> <li>3 Dustproof, mothproof, anti-light interference design.</li> </ul>	 <p><b>FX-A712M</b></p> <ul style="list-style-type: none"> <li>1 Intruder alarm system.</li> <li>2 Remote control arm, disarm, monitor, and intercom by phone.</li> <li>3 SOS, fire, gas, door, hall, window, balcony, and boundary places alarm.</li> <li>3 Artificial intelligent digital voice announcer.</li> </ul>	 <p><b>FA-5198A</b></p> <ul style="list-style-type: none"> <li>1 Wired Photoelectric Smoke Detector with High Stability Sensor</li> <li>2 Sound and Flash Warning when Alarm Generated.</li> <li>3 Relay Output, NO/NC Output</li> <li>3 Power Supply Input DC9-30V.</li> </ul>
---	---	--	---

## Villa Intercom Kits & Accessories

 <p><b>F-976HT</b></p> <ul style="list-style-type: none"> <li>1 Wi-Fi supported smart 2 wire villa intercom system.</li> <li>2 High resolution 1080p 9-inch touch display.</li> <li>3 Able to receive instant video call from doorbell and open the door from Mobile APP.</li> <li>3 The whole system supports up to 4 outdoors and 6 indoors.</li> </ul>	 <p><b>F-923</b></p> <ul style="list-style-type: none"> <li>1 Wi-Fi supported smart villa intercom outdoor station.</li> <li>2 Support mobile application and unlock from mobile phone.</li> <li>3 Waterproof IP65 Rating - Metal housing.</li> <li>3 Night Vision: 5pcs IR LEDs for night vision.</li> </ul>	 <p><b>F-973HT (Black)</b></p> <ul style="list-style-type: none"> <li>1 Wi-Fi supported smart 2 wire villa intercom system.</li> <li>2 High resolution 1080p 7-inch touch display (Black color).</li> <li>3 Able to receive instant video call from doorbell and open the door from Mobile APP.</li> <li>3 The whole system supports up to 4 outdoors and 6 indoors.</li> </ul>	 <p><b>F-922</b></p> <ul style="list-style-type: none"> <li>1 Wi-Fi supported smart villa intercom outdoor station.</li> <li>2 Support mobile application and unlock from mobile phone.</li> <li>3 Waterproof IP65 Rating - Metal housing.</li> <li>3 Wide-Angle AHD1080P/2MP (1920*1080P).</li> </ul>
--	--	--	---

## Apartment Intercom Systems

 <p><b>FXG</b></p> <ul style="list-style-type: none"> <li>1 Networking of primary and secondary administrators</li> <li>2 Calling and Called Details, Talk with Outdoor Station, Indoor Monitor &amp; Unlock</li> <li>3 Alarm (Anti-Theft Zone), Received Call and Missed Call Record.</li> <li>3 Monitor the Outdoor Station</li> <li>3 Support to Connect CCTV Camera</li> </ul>	 <p><b>FX-D201-EHCN</b></p> <ul style="list-style-type: none"> <li>1 Building Outdoor Station</li> <li>2 High Definition CCD Camera, White Back-light Compensation</li> <li>2 Waterproof IP65, Nightlight Keyboard &amp; Password Unlock</li> <li>2 IC/ID Access Control and Mobile Phone Unlock - (Optional)</li> <li>2 Optical Fiber Networking Support</li> </ul>	 <p><b>FX-R163-H</b></p> <ul style="list-style-type: none"> <li>1 7" TFT LCD Color Indoor Monitor, Elegant Design</li> <li>2 Hand-Free Visual Intercom, Talking, Unlocking &amp; Call Administrator</li> <li>2 Video Surveillance &amp; Information Checking</li> <li>2 Comes with 2 Defense Zones(8 Defense Zones Optional)</li> <li>2 It Can be Used as Extension Slave Monitor</li> <li>2 Visitor Photo Message Query</li> </ul>	 <p><b>FXR13-H</b></p> <ul style="list-style-type: none"> <li>1 White Audio Guard Station for Block Porter</li> <li>2 Call Manager &amp; Unlock</li> <li>2 Second Confirmation and Doorbell Port to Connect</li> <li>2 Elevator Linkage Control</li> <li>2 Can be used as a Duplex Extension</li> <li>2 Mode of Operation: Handset Call</li> </ul>
---	---	---	---

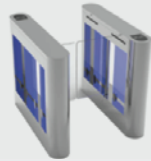


## Gate Barriers & Accessories



**FT-B001**

- ▶ Tripod Turnstile – Stand Type
- ▶ Passage Width: 600mm | Arm Open/Close Time: 2s
- ▶ Bi-direction or Uni-direction passing.



**FT-C201**

- ▶ Swing Turnstile Barrier, Passage Width: <=1000mm
- ▶ Arm Turning: Bi-direction | Arm Open/Close Time: 2.5s
- ▶ Power Supply: AC220V±10V, 50Hz / AC110V±10V, 60Hz



**FG-D107**

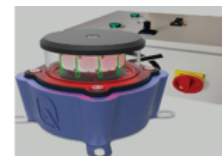
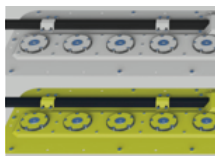
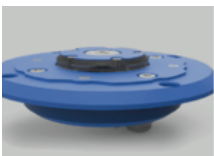
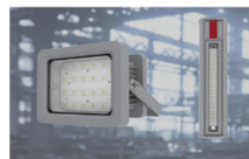
- ▶ Parking Gate Barrier – 6S/3S Speed
- ▶ Parking Gate Barrier with LED display Indicator Entry and Stop
- ▶ Arm Options: 6/4/3 M Adjustable Straight Arm, LED Arm, 90 / 180 Degree Folding Arm, etc



**F-PL925**

- ▶ Remote controlled parking reservation lock.
- ▶ Battery operated.
- ▶ Rising height: 400mm.
- ▶ Protection grade: IP67 Weatherproof.

## Hazardous Area Emergency Lighting



We team up with top brands...



## Commitment to Excellence

At our core, we are committed to being a trusted leader in the Safety and Security industry, recognized for our expertise, integrity, and dedication to protecting people, assets, and environments. Driven by strong ethical values, we focus on delivering proactive, effective solutions that ensure safety and security. Our mission is to exceed expectations, mitigate risks, and foster a culture of trust and accountability.

“**Empowering client success  
through unwavering dedication.**”







COMMITTED TO  
QUALITY & SERVICE EXCELLENCE

**Contact:**

T: +971 44 53 8913  
info@getrad.ae

**Website:**

[www.getrad.ae](http://www.getrad.ae)

**Head Office:**

Warehouse No : 01  
19D street Ras al Khor  
Ind Area 01, Dubai, U.A.E

**Abu Dhabi Branch:**

GetRad General Trading LLC  
Warehouse No: 12, M44  
Musaffah Industrial Area,  
Abu Dhabi. U.A.E